

CHINOOK SALMON

Pacific Salmon ID Card

• *Oncorhynchus tshawytscha* •



HOW TO IDENTIFY

- Black gums
- Large mouth with sharp teeth
- Black spots on both tail lobes
- Many dark spots on the back
- Largest Pacific salmon



RANGE

Pacific coast rivers and offshore waters of the Pacific Northwest



TYPICAL SIZE

Usually 10–30 lb, sometimes much larger



BEST CLUE

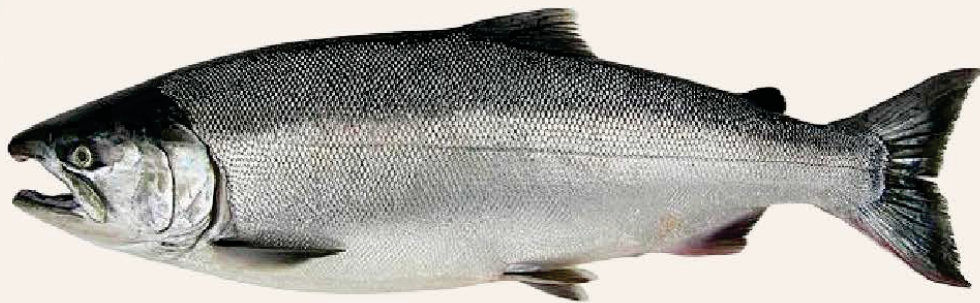
Black gums + spots on both tail lobes

 PNWHuntingFishing.com

COHO SALMON

Pacific Salmon ID Card

• *Oncorhynchus kisutch* •



HOW TO IDENTIFY

- Mouth is light with a white gum line
- Medium size, sharp teeth
- Spots only on upper lobe of tail
- Spots on back
- Wide caudal peduncle



RANGE

Pacific coast rivers and offshore waters of the Pacific Northwest



TYPICAL SIZE

Usually 6–12 lb, sometimes larger



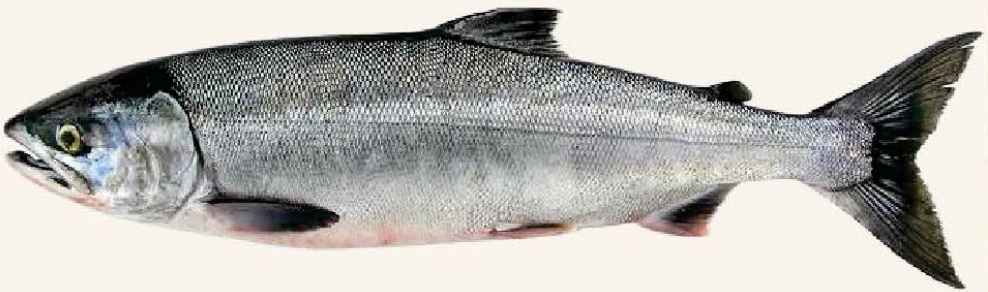
BEST CLUE

White gums + spots only on upper tail lobe

CHUM SALMON

— Pacific Salmon ID Card —

• *Oncorhynchus keta* •



HOW TO IDENTIFY

- Mouth is white with a white gum line
- Well developed teeth
- No spots on tail or back
- Calico markings may show faintly
- Narrow caudal peduncle
- White tip on anal fin



RANGE

Pacific coast rivers and offshore waters of the Pacific Northwest



TYPICAL SIZE

Usually 8–15 lb



BEST CLUE

No spots + white tip on anal fin

PINK SALMON

Pacific Salmon ID Card

• *Oncorhynchus gorbuscha* •



HOW TO IDENTIFY

- Mouth is white with a black gum line
- In marine areas, almost no teeth
- Large oval spots on both lobes of tail
- Large black spots on back
- Pointed lower jaw
- Very small scales



RANGE

Pacific coast rivers and offshore waters of the Pacific Northwest



TYPICAL SIZE

Usually 3–6 lb



BEST CLUE

Large oval spots on both tail lobes

SOCKEYE SALMON

Pacific Salmon ID Card

Oncorhynchus nerka



HOW TO IDENTIFY

- Mouth is white with a white gum line
- Almost toothless
- No spots on tail or back
- Large, bright gold, glassy eye



RANGE

Pacific coast rivers and offshore waters of the Pacific Northwest



TYPICAL SIZE

Usually 4–8 lb



BEST CLUE

No spots + bright gold eye

 PNWHuntingFishing.com

LINGCOD

— Pacific Fish ID Card —

• *Ophiodon elongatus* •



HOW TO IDENTIFY

- Large head and huge mouth
- 18 large sharp teeth
- Long body that narrows toward the tail
- Brown, gray, or green mottled coloring
- Long dorsal fin



RANGE

Nearshore rocky reefs, kelp beds, and coastal Pacific Northwest waters



TYPICAL SIZE

Usually 5–20 lb, sometimes 30+ lb



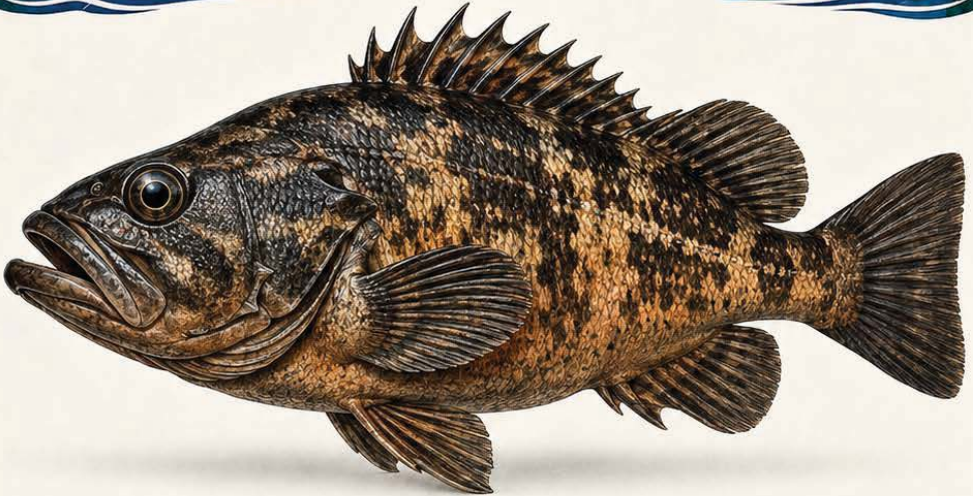
BEST CLUE

Huge mouth + long mottled body

ROCKFISH

Pacific Fish ID Card

• *Sebastes spp.* •



HOW TO IDENTIFY

- Stout body with spiny dorsal fin
- Large mouth and thick head
- Color varies from black to olive to copper
- Mottled or blotched body common
- Often found around rocky structure



RANGE

Rocky reefs, jetties, and offshore structure in Pacific Northwest waters



TYPICAL SIZE

Usually 1–8 lb, varies by species



BEST CLUE

Spiny dorsal fin + chunky mottled body



PNWHuntingFishing.com

STARRY FLOUNDER

— Pacific Fish ID Card —

• *Platichthys stellatus* •



HOW TO IDENTIFY

- Flat body with both eyes on one side
- Usually left-eyed
- Dark upper side, white underside
- Orange and black bars on dorsal and anal fins
- Rough star-shaped scales



RANGE

Bays, estuaries, beaches,
and coastal Pacific
Northwest waters



TYPICAL SIZE

Usually 1–10 lb



BEST CLUE

Striped fins +
rough starry scales


PNWHuntingFishing.com

PACIFIC HALIBUT

Pacific Fish ID Card

• *Hippoglossus stenolepis* •



HOW TO IDENTIFY

- Flat body with both eyes on the right side
- Dark brown upper side, white underside
- Large diamond-shaped body
- Large mouth and arched lateral line
- Largest Pacific flatfish



RANGE

Continental shelf and coastal Pacific Northwest, often deeper offshore



TYPICAL SIZE

Usually 20–100+ lb, giants much larger



BEST CLUE

Both eyes on one side + giant flat body